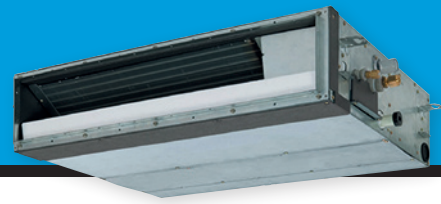


MMD-AP_SPH1 SLIM DUCT



Whether installed in a ceiling void or in a false ceiling, Toshiba slim duct offers the ultimate technology, with exceptional energy savings, high performance and easy installation.

Wide installation possibilities

- This ultra-flexible, invisible and silent unit creates a pleasant and comfortable environment for a wide range of applications, such as hotels, offices and shops.
- Slimline design, with a height of just 21cm, gives increased flexibility when designing and installing the system.
- Ideal for sites that have restrictions on the space above ceiling level, where only minimum height units can be installed.

Customizable

- Static pressure up to 50Pa. This feature combined with the unobtrusive installation is the preferred solution in many old buildings, which have a decorative high level ceiling.
- Can be installed in any ceiling void and coupled with with any kind of air diffuser.
- Built-in high-lift drain pump.

Quiet

- Exceptionally low noise level – down to 24 dB(A) – makes this unit the right choice for bedrooms.

CAPACITY



1.7kW > 6.3kW

SOUND PRESSURE LEVEL



24dB(A)

OUTDOOR UNITS



Side Blow & MINI SMMS-e



SMMS-e



SHRM-e

LOCAL CONTROLS



TCB-AX32E2



RBC-AMS55E-ES(EN)
RBC-AMS41E
RBC-AMT32E
RBC-AS41E

SLIM DUCT Performances

Indoor unit	MMD-	AP0056SPH1-E/TR	AP0074SPH1-E/TR	AP0094SPH1-E/TR	AP0124SPH1-E/TR	AP0154SPH1-E/TR	AP0184SPH1-E/TR	AP0244SPH1-E/TR	AP0274SPH1-E/TR
Cooling capacity	kW	1.7	2.2	2.8	3.6	4.5	5.6	7.1	8.0
Heating capacity	kW	1.9	2.5	3.2	4.0	5.0	6.3	8.0	9.0
Power consumption	kW	0.038	0.039	0.039	0.043	0.045	0.054	0.105	0.105
Running current	A	0.29	0.29	0.29	0.31	0.32	0.39	0.75	0.75
Starting current	A	0.51	0.51	0.51	0.54	0.56	0.68	1.13	1.13

SLIM DUCT Physical data

Indoor unit	MMD-	AP0056SPH1-E/TR	AP0074SPH1-E/TR	AP0094SPH1-E/TR	AP0124SPH1-E/TR	AP0154SPH1-E/TR	AP0184SPH1-E/TR	AP0244SPH1-E/TR	AP0274SPH1-E/TR
Air flow (h/m/l)	m ³ /h	435/400/370	540/470/400	540/470/400	600/520/450	690/600/520	780/680/580	1080/1000/900	1080/1000/900
Air flow (h/m/l)	l/s	121/111/103	150/131/111	150/131/111	167/144/125	192/167/144	217/189/161	300/278/250	300/278/250
Sound pressure level, rear suction (h/m/l)	dB(A)	26/25/24	28/26/24	28/26/24	29/27/25	32/30/28	33/31/29	38/36/33	38/36/33
Sound pressure level, bottom suction (h/m/l)	dB(A)	33/32/30	36/33/30	36/33/30	38/35/32	39/36/33	40/38/36	49/47/44	49/47/44
Dimensions (HxWxD)	mm	210x845x645	210x845x645	210x845x645	210x845x645	210x845x645	210x845x645	210x1140x645	210x1140x645
Weight	kg	22	22	22	22	23	23	29	29
External static pressure	Pa	10	10	10	10	10	10	10	10
Max external static pressure	Pa	50	50	50	50	50	50	50	50
Connecting pipe, gas		3/8"	3/8"	3/8"	3/8"	1/2"	1/2"	5/8"	5/8"
Connecting pipe, liquid		1/4"	1/4"	1/4"	1/4"	1/4"	1/4"	3/8"	3/8"
Drain port diameter	mm	25	25	25	25	25	25	25	25
Power supply	V-ph-Hz	220/240-1-50	220/240-1-50	220/240-1-50	220/240-1-50	220/240-1-50	220/240-1-50	220/240-1-50	220/240-1-50