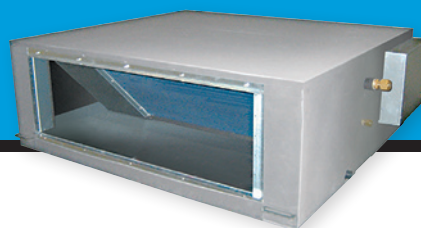


MMD-AP_HFE FRESH AIR INTAKE



This indoor unit has been specifically designed to manage and treat fresh air as it is distributed into the building. This indoor unit manages and treats the fresh air intake before it will be distributed into the building.

AHU alternative

- Ideal solution for schools, hospitals, offices and all the buildings that require fresh air ventilation (in limited quantity), without any further exclusive system, where there is insufficient outdoor space to install a large air handling unit or whenever zoning of a building with different independent small tenant areas are clearly defined.
- Pre-heat, pre-cool functions (discharge temperature setting range from 16°C to 27°C).

Adaptability

- External static pressure available up to 230 Pa.

Air quality

- Standard and high-performance filters available as an option.
- TCC-Link control connection.

CAPACITY



8.9kW > 28kW

AIR FLOW



1080m³/h > 2100m³/h

SOUND PRESSURE LEVEL



41dB

OUTDOOR UNITS



SMMS-e

LOCAL CONTROLS



RBC-AMS55E-ES/EN
RBC-AMS41E
RBC-AMT32E

FRESH AIR INTAKE Performance

Indoor unit	MMD-	AP0481HFE	AP0721HFE	AP0961HFE
Cooling capacity (Note 1)	kW	14.0	22.4	28.0
Heating capacity (Note 1)	kW	8.9	13.9	17.4
Power consumption	kW	0.28	0.45	0.52
Running current	A	1.43	2.52	2.73
Starting current	A	3.50	7.00	7.00

FRESH AIR INTAKE Physical data

Indoor unit	MMD-	AP0481HFE	AP0721HFE	AP0961HFE
Standard Air flow (h/l)	m³/h	1080	1680	2100
Sound pressure level (h/m/l)	dB(A)	45/43/41	46/45/44	46/45/44
Dimensions (HxWxD) (Note 2)	mm	492x892x1262	492x1392x1262	492x1392x1262
Weight	kg	93	144	144
External static pressure	Pa	170-210-230	140-165-180	160-190-205
Connecting pipe, gas	in	5/8"	7/8"	7/8"
Connecting pipe, liquid	in		1/2"	1/2"
Drain port diameter	mm	25	25	25
Power supply	V-ph-Hz	220/240-1-50	220/240-1-50	220/240-1-50
Operation range	Cooling (Note 3)	5 - 43°C	5 - 43°C	5 - 43°C
	Heating (Note 4)	-5 - 43°C	-5 - 43°C	-5 - 43°C

* The setting temperature is 16 - 27°C (standard FCU, 18 - 29 °C). * An option humidifier is not available with Fresh Air Intake Indoor unit. * Height difference between Fresh Air Intake Indoor units must be within 0.5 m. Height difference between Fresh Air Intake Indoor unit and standard FCU must be within 30 m. Note 1 : Rated conditions : Cooling : Outdoor air temperature 33°C DB/28°C WB setting temperature 18°C. Heating : Outdoor air temperature 0°C DB/-2.9°C WB setting temperature 18°C. Piping : Length 7.5 m / Height 0 m. Note 2 : Normally, the values measured in the actual operating environment become large than the indicated values due to the effects of external sound. Note 3 : When supply air temperature is "setting temperature + 3°C" or less, Fresh Air Intake unit operates as FAN mode. When supply air temperature is "19°C" or less, Fresh Air Intake unit operates as FAN mode. Note 4 : When supply air temperature is "setting temperature -3°C" or over, Fresh Air Intake unit operates as FAN mode.